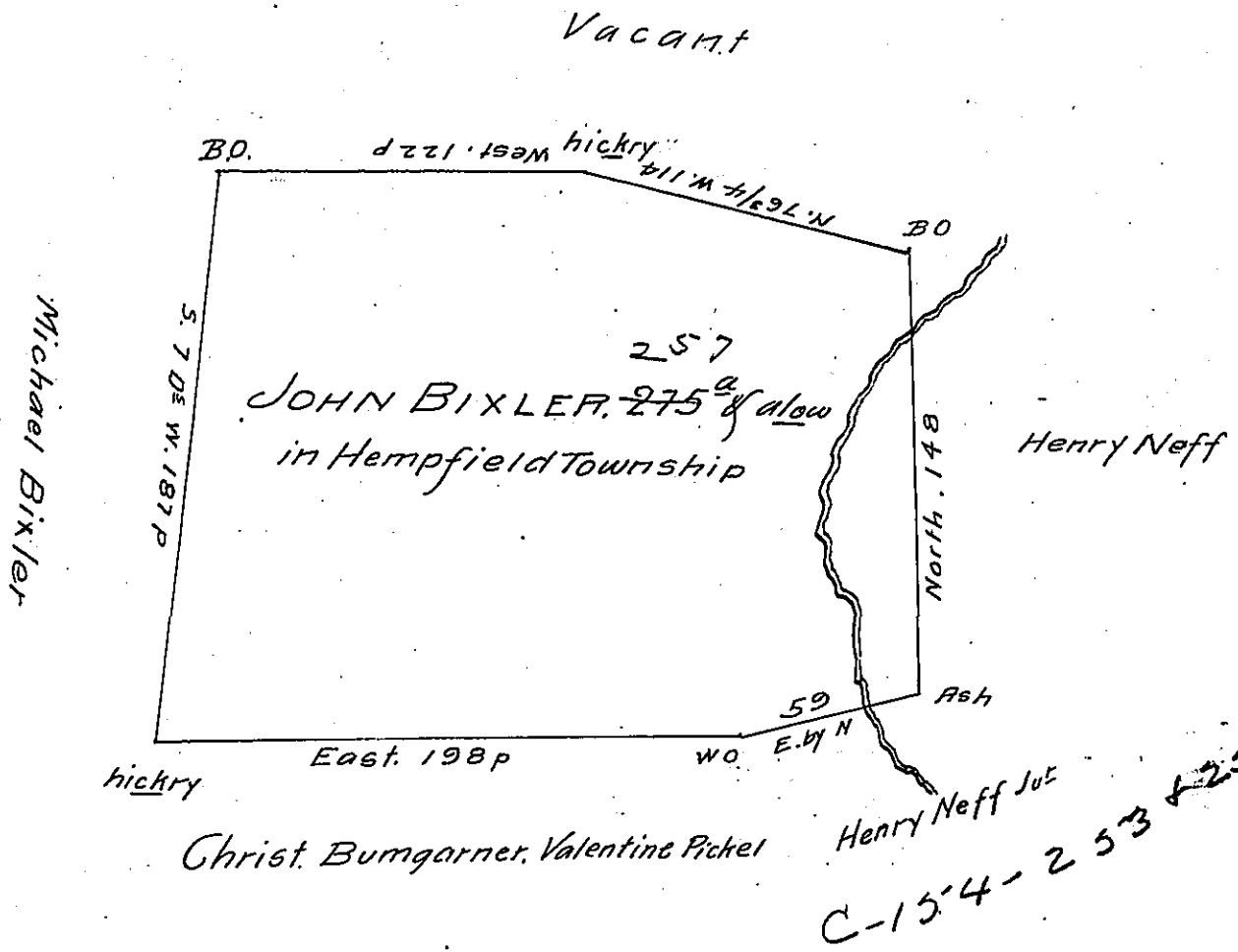


FORM No. 1.



By Order of the Proprietary surveyed to John Bixler a tract of Land in Hempfield Township Lancaster County containing 257 acres & the usual allowance for roads &c. (the same being now in possession of Michael Whitmore) according to the above figure. Surveyed April - 1737

By Sa: Blunston

IN TESTIMONY that the above is a copy of the original remaining on file in the Department of Internal Affairs of Pennsylvania, made conformably to an Act of Assembly approved the 16th day of February 1833, I have hereunto set my hand and caused the Seal of said Department to be affixed at Harrisburg, this third day of May 1907

Isaac B. Brown
Secretary of Internal Affairs.